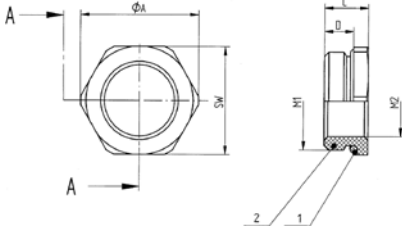


SKINDICHT® MR-M hex.



A-A



Benefits

- Enables the use of cable glands with smaller connection threads than the existing threaded holes
- With guide notch for O-ring
- Assembling with a wrench

Application range

- Machines
- Devices
- Housings

Product Make-up

- Metric connection thread acc. to DIN EN 60423
- Basis for technical information DIN IEC 62444

Technical data

	Classification ETIM 5/6 ETIM 5.0/6.0 Class-ID: EC000441 ETIM 5.0/6.0 Class-Description: Cable screw gland
	On request FKM O-ring -20 °C to +200 °C
	Material Body: nickel-plated brass O-ring: NBR
	Temperature range -20°C to +100°C

Article number	Thread, male M1	Thread, female M2	SW wrench size mm	Ø A (mm)	Overall length C mm	Thread length D mm	Pieces / PU
SKINDICHT® MR-M hex.							
MR-M-HEX-M16-M12_MPX	16 x 1,5	12 x 1,5	18	20.2	8.5	5.5	50
MR-M-HEX-M20-M16_MPX	20 x 1,5	16 x 1,5	22	24.4	9.0	6	50
MR-M-HEX-M25-M16_MPX	25 x 1,5	16 x 1,5	28	31.2	10.0	6.5	50
MR-M-HEX-M25-M20_MPX	25 x 1,5	20 x 1,5	28	31.2	10.0	6.5	50
MR-M-HEX-M32-M16_MPX	32 x 1,5	16 x 1,5	36	40.0	11.5	8	25
MR-M-HEX-M32-M20_MPX	32 x 1,5	20 x 1,5	36	40.0	11.5	8	25
MR-M-HEX-M32-M25_MPX	32 x 1,5	25 x 1,5	36	40.0	11.5	8	25
MR-M-HEX-M40-M25_MPX	40 x 1,5	25 x 1,5	43	47.5	12.5	8.5	10
MR-M-HEX-M40-M32_MPX	40 x 1,5	32 x 1,5	43	47.5	12.5	8.5	10
MR-M-HEX-M50-M40_MPX	50 x 1,5	40 x 1,5	54	58.0	14.0	10	5
MR-M-HEX-M63-M50_MPX	63 x 1,5	50 x 1,5	67	74.0	14.0	9.5	5
MR-M-HEX-M75-M63_MPX	75 x 1,5	63 x 1,5	80	90.0	17.0	11	1
SKINDICHT® MR-M, blank brass, with hexagon							
MR-M-HEX-M80-M63_MPX	80 x 2	63 x 1,5	85	93.5	23.0	15	1

Photographs and graphics are not to scale and do not represent detailed images of the respective products.