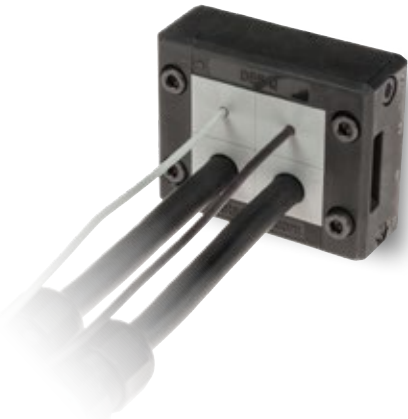


# DES Q

## *Splittable frame for pre-terminated cables*

- ▶ Multiple possible configurations in one frame size
- ▶ Frame screws in AISI304 Stainless Steel
- ▶ Integrated gasket
- ▶ Strain relief according to EN 62444
- ▶ Sturdy construction IK10
- ▶ Up to IP66



| Model / Code | Some possible configurations        | Cut-out [mm] | Pcs / pack |
|--------------|-------------------------------------|--------------|------------|
| DES-Q_MPX    |                                     | 40 x 39      | 10         |
| KIT_DES4     | Set of 4 mounting screws in AISI304 |              | 10         |

The DES Q cable entry system consists of a splittable frame designed to accommodate small (SPP), multiple (X) or large (SPG) inserts for cables in the same frame. Future cable size changes can be easily accommodated.

Thanks to the robust construction, the DES Q is a long lasting product.

### Technical data

**Material:** PP+GF

**Flammability:** self-extinguishing acc. to UL94-V0

**Temperature:** -40°C... +155°C (static)

**Features:** halogens and silicones free

### Related products



Inserts SPG and SPG M



Inserts SPP and SPP K



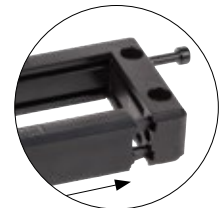
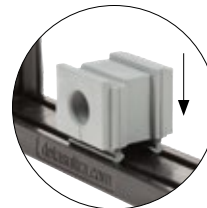
Inserts SPP 2x



Inserts SPP 4x

Flap frame

hydraulic punch driver HY360



### Dimensions [mm]

