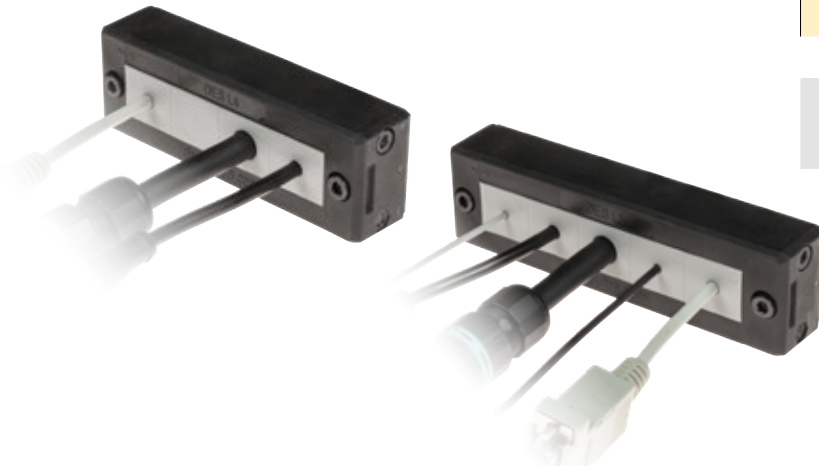


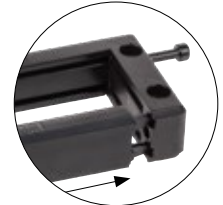
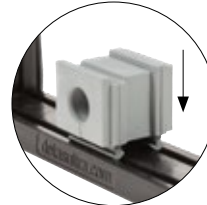
DES L4/L5

Splittable frame for pre-terminated cables

- ▶ Multiple possible configurations in one frame size
- ▶ A small number of cables can be easily accommodated.
- ▶ Frame screws in AISI304 Stainless Steel
- ▶ Integrated gasket
- ▶ Strain relief according to EN 62444
- ▶ Sturdy construction IK10
- ▶ Up to IP66



The DES L4 and L5 splittable frames enable pre-terminated cables from 2 to 16mm in diameter to pass through enclosure walls, providing strong strain relief and water protection.



Technical data

Material: PP+GF

Flammability: self-extinguishing acc. to UL94-V0

Temperature: -40°C... +155°C (static)

Features: halogens and silicones free

Related products

- Inserts SPP and SPP K
- Inserts SPP 2x
- Inserts SPP 4x

Model / Code	Some possible configurations	Cut-out [mm]	Pcs / pack
DES-L4_MPX		86 x 18	10
DES-L5_MPX		108 x 18	10
KIT_DES2	Set of 2 mounting screws in AISI304		10

Dimensions [mm]

