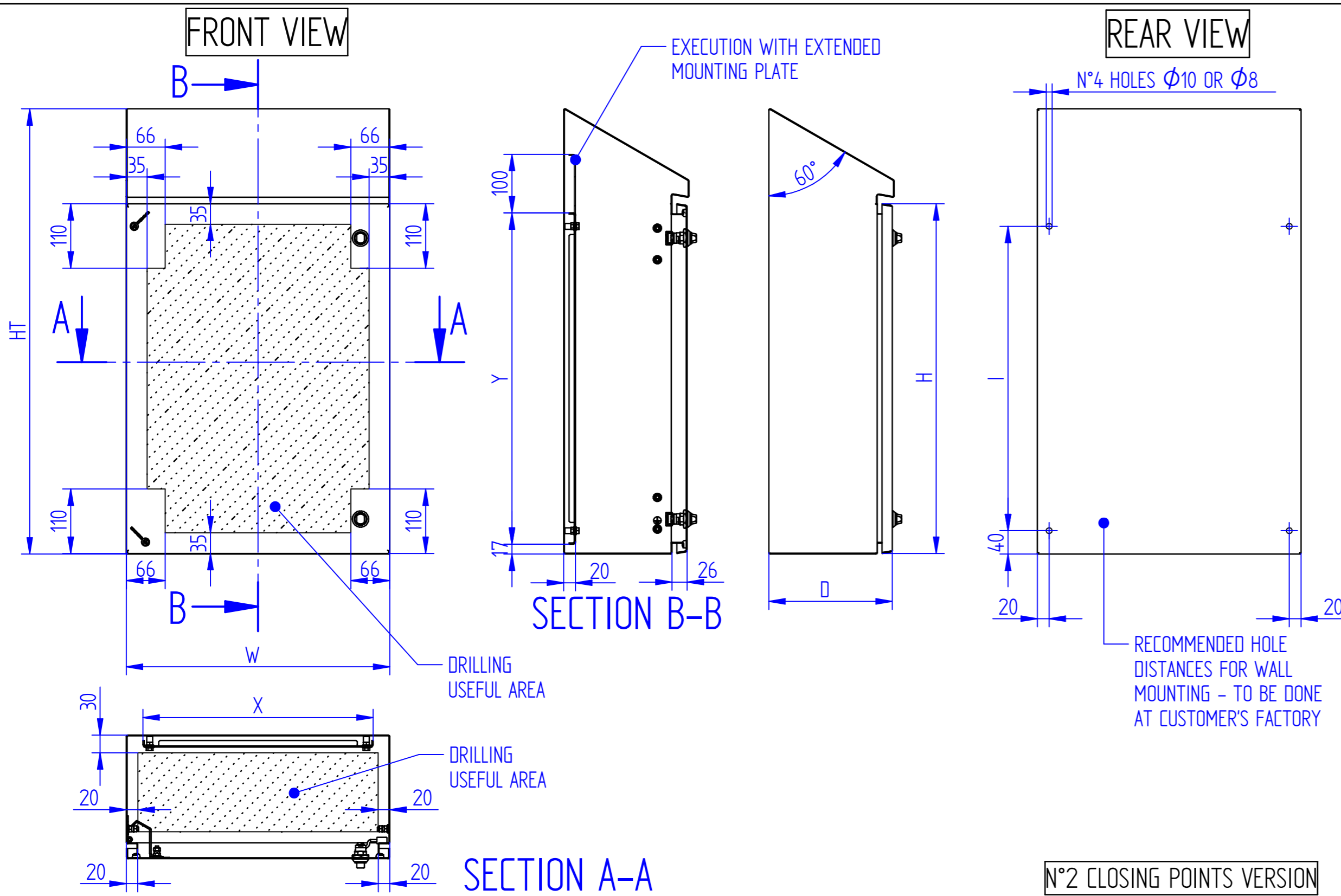
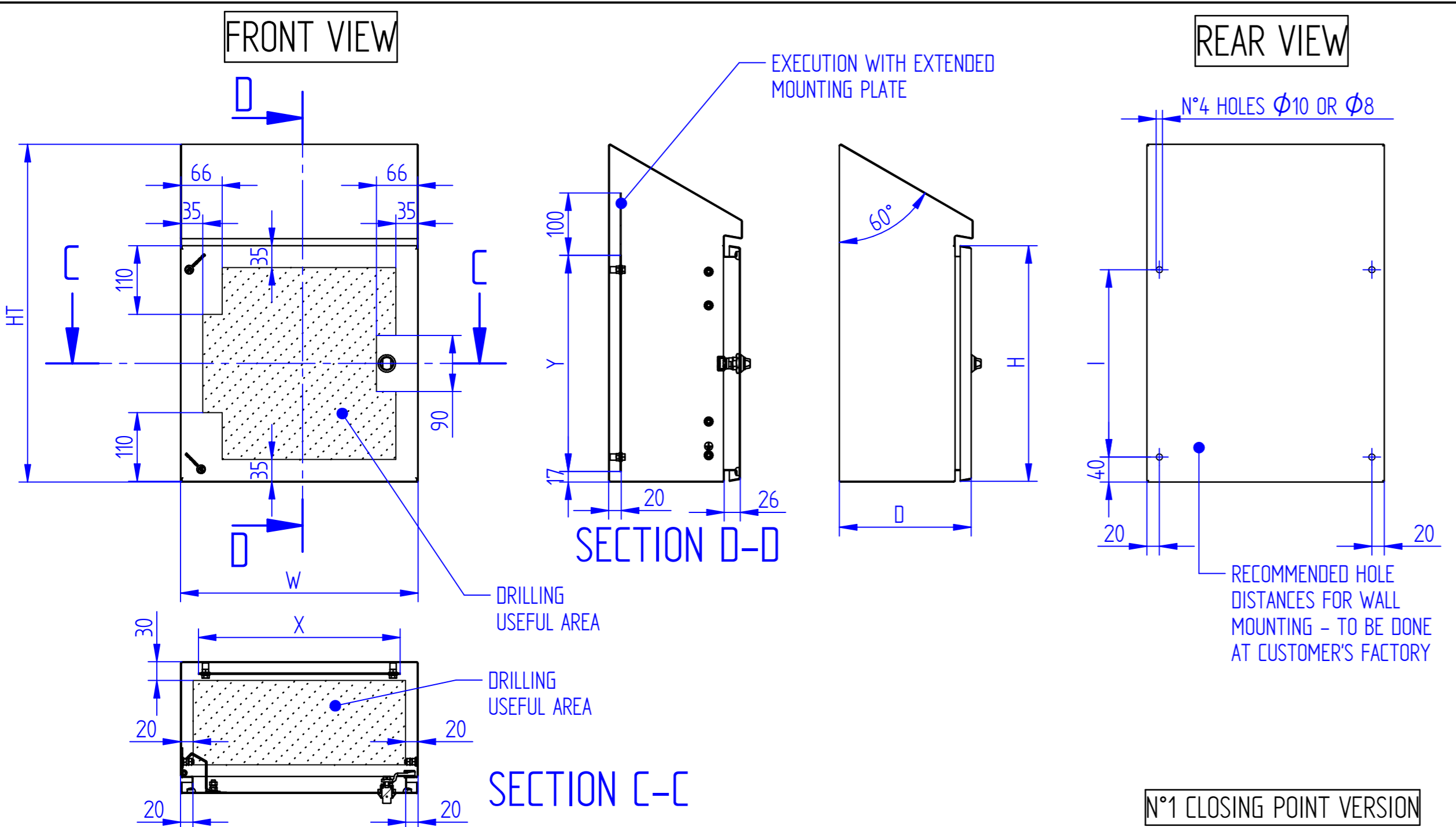
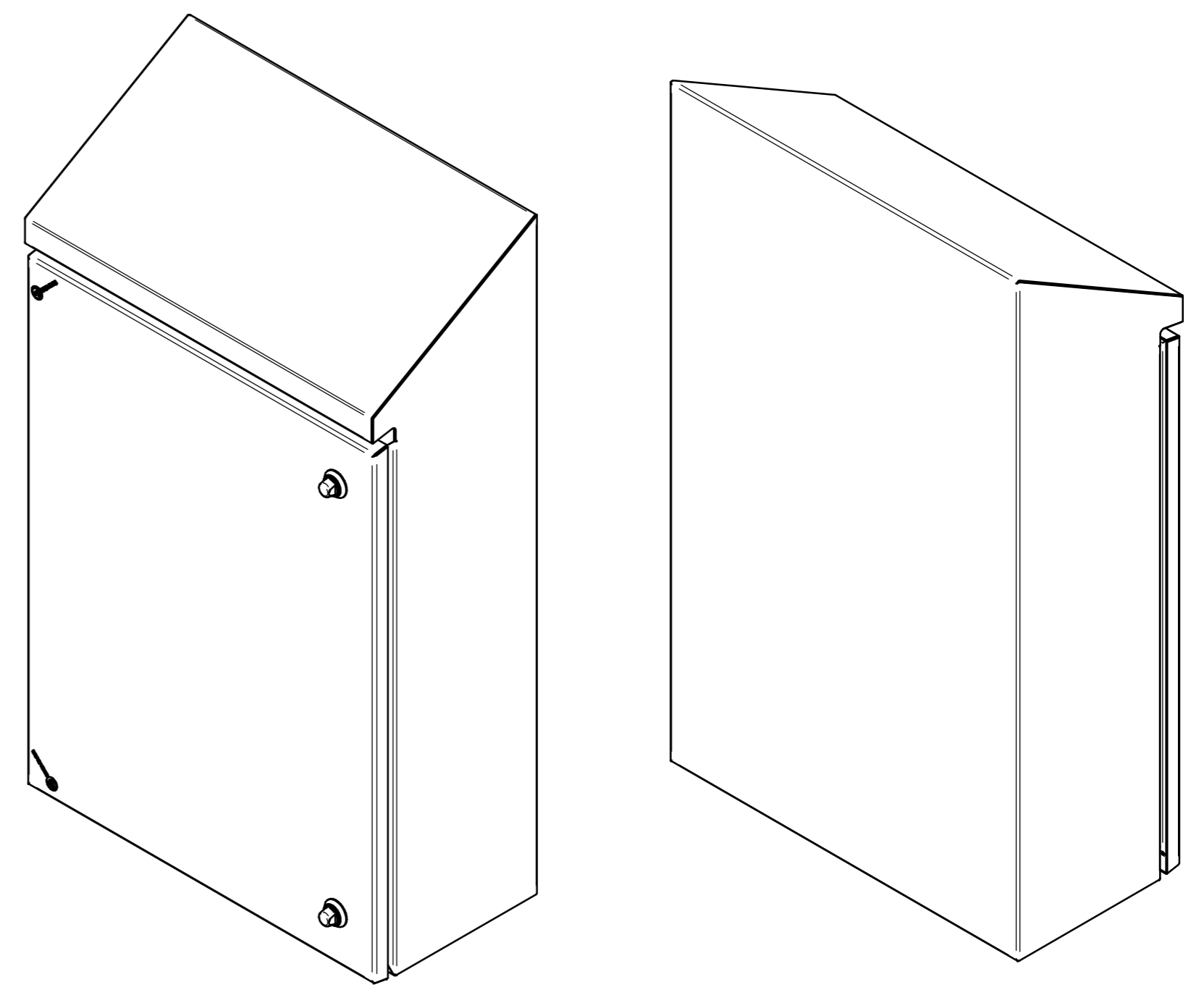


TOLLERANZE IN GRADO MEDIO COME DA NORMA: ISO2768-m



N°2 CLOSING POINTS VERSION


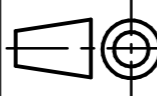


N°1 CLOSING POINT VERSION

ITEM CODE	EXTERNAL DIMENSIONS				WIRING PLATE		FEATURES			
	W	H	D	HT	X	Y	N. CLOSING POINTS	N. FIXING POINTS	N. HINGES	FIXING DISTANCE (I)
CHD253021 (*)	250	300	210	460	193	266	1	4	2	220
CHD383821 (*)	380	380	210	540	323	346	1	4	2	300
CHD386021	380	600	210	760	323	566	2	4	2	520
CHD454521	450	450	210	610	393	416	2	4	2	370
CHD456021	450	600	210	760	393	566	2	4	2	520
CHD606021	600	600	210	760	543	566	2	4	2	520
CHD604525	600	450	250	635	566	393	2	4	2	370
CHD606025	600	600	250	785	543	566	2	4	2	520
CHD806030	800	600	300	815	743	566	2	6	3	520
CHD808030	800	800	300	1015	743	766	2	6	3	720
CHD8010030	800	1000	300	1215	743	966	2	6	3	920
CHD8012030	800	1200	300	1415	743	1166	2	6	3	1120

(*) WIRING PLATE WITHOUT LATERAL BENDS

STANDARD POSITION HINGES ON LEFT SIDE
- REVERSIBLE DOOR -

Description		<p>LINE BOXES AT INCREASED HYGIENE CHD SERIES</p>		
<p>Technical Data Sheet COD.</p> <p>SCTEC.CHD.ENG</p>				
		<p>NON APPORTARE MODIFICHE AL DISEGNO SENZA L'AUTORIZZAZIONE DELL'UFFICIO TECNICO</p>		<p>MPGAMMA</p> <p>WORLDWIDE</p>