



PUSH-BUTTON PANELS SPN SERIE

The push-button panels of the “SPN” series entirely made of stainless steel. They have been created to meet our demands/request for practicality, installation and cleaning, for compliance with standards for hygiene.



FEATURES

- Watertight boxes made in AISI 304L (Wnr 1.4307) stainless steel.
- Body with welded and finished corners.
- Cover with welded and finished corners and screwed to the box body.
- Ø 22,5 mm drillings on the cover for push-button panel mounting.
- Polyurethane seal with robotised application.
- M4 S/S leak-proof cover-body's clamping screws.
- Internal M5x15 stainless steel earthing threaded studs bolts on the cover.
- Internal M5 threaded spacers on the body for wiring plate fixing or DIN bar fixing.
- FINE external SATIN finish, medium Scotch-Brite type.
- Sheet metal thickness values of the body and cover from 10/10 mm to 12/10 mm depending on the size.
- Rear prearrangement for wall fixing with M5 blind threaded holes.

OPTIONALS UPON REQUEST

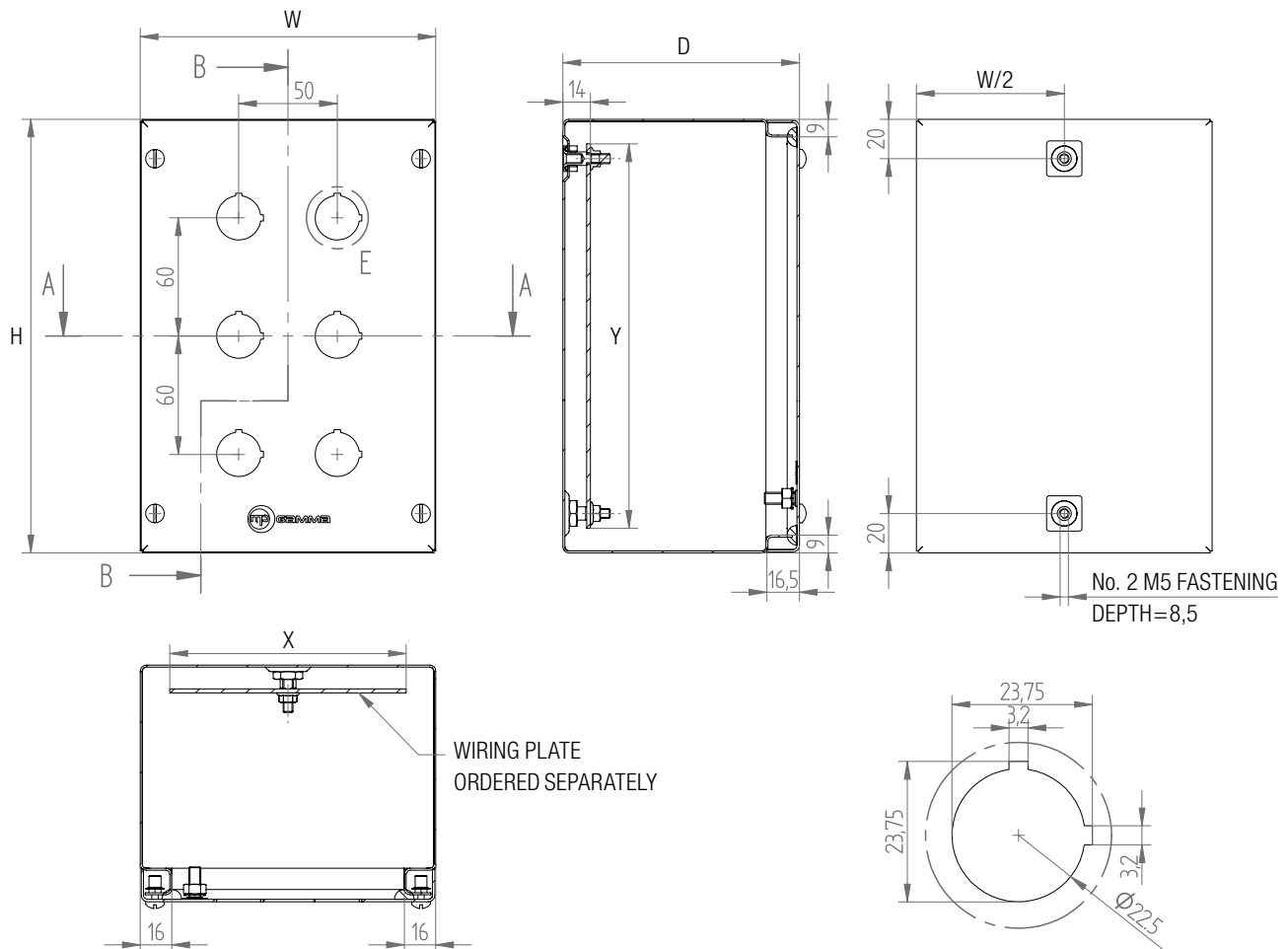
- Drilling as per design on body and cover.
- Resistant silicone seals, from - 50° C to + 180° C.
- Products made with AISI 316L or other special steels.
- Special dimensions.
- Generic and specific accessories.

CERTIFICATIONS

- **IP66-IP67-IP69K-IK10 protection rating certified by TÜV SÜD in accordance with EN 62208** (in combination with equipments with equivalent certification).
- TYPE 1, 12, 4, 4X (cULus) protection rating in accordance with UL50, 508A, 746C and CSA 22.2 No 14,94 (upon request).
- Suitable for use in potentially explosive atmospheres (Group -II-, Category -3-, Zone -22,2-) with the application of the accessory KIT- ATEX-SPN-2-22 (in combination with equipments with equivalent certification).
- Welding process qualified in accordance with 15614-1:2012 WPQR (Welding Procedure Qualification Record).



AVAILABLE ACCESSORIES



Art. Code	External dimensions			Wiring plate		Features		
	W	H	D	X	Y	Closing points No.	No. Holes for wall fixing	Holes
SPN997	90	90	75	-	-	2	2	1
SPN10109	100	100	90	-	-	4	2	1
SPN10169	100	160	90	70	135	4	2	2
SPN10229	100	220	90	70	195	4	2	3
SPN151612	150	160	120	120	135	4	2	4
SPN152212	150	220	120	120	195	4	2	6