



► PENDANT CONTROL PANEL ENCLOSURES KC SERIES

The Pendant control panel enclosures of the “KC” series are designed to contain command and control devices near the operator.



FEATURES

- Entirely made of AISI 304L steel (Wnr 1.4307).
- To be used in conjunction with the “T” series system of load-bearing arms with the relative GM series rotating joints (machine side) or GS series (Pendant control panel side) and fixed joints GF series to ensure smooth control of the instruments.
- Designed for support with arms featuring a 48 mm and 60 mm diameter.
- Can be assembled with the arm support on the lower or upper side and the door is reversible.
- Body with welded and finished corners.
- Door with rounded corners, can be opened to at least 120° with internal stainless steel hinges, side locks with stainless steel insert featuring a double flap, welded and finished corners.
- FINE external SATIN finish, medium Scotch-Brite type.
- Polyurethane seal with robotised application.
- Internal M6 studs bolts fixed at the back of the body to fix DIN bars or a galvanised wiring plate (item KP) to be ordered separately.
- Ergonomic handle.
- Internal M6x16 stainless steel earthing threaded studs bolts.
- Sheet metal thickness values of the body and door from 12/10 mm to 15/10 mm depending on the size.

OPTIONALS UPON REQUEST

- Drilling as per design.
- Resistant silicone seals, from -50°C to + 180°C.
- Products made with AISI 316L or other special steels.
- Special dimensions.
- Generic and specific accessories.

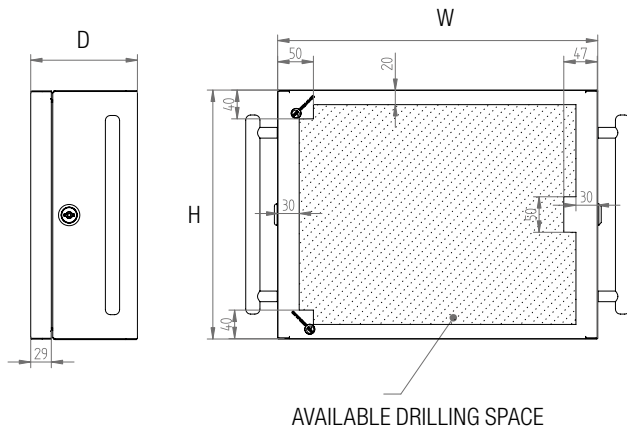
CERTIFICATIONS

- **IP66-IP69K-IK10 protection rating certified by TÜV SUD in accordance with EN 62208.**
- TYPE 1, 12, 4, 4X (cULus) protection rating in accordance with UL50, 508A, 746C and CSA 22.2 No14,94 (upon request).
- Suitable for use in potentially explosive atmospheres (Group -II-, Category -3-, Zone -22,2-) with the application of the accessory KIT-ATEXKC-2-22.
- Welding process qualified in accordance with 15614-1:2012 WPQR (Welding Procedure Qualification Record).

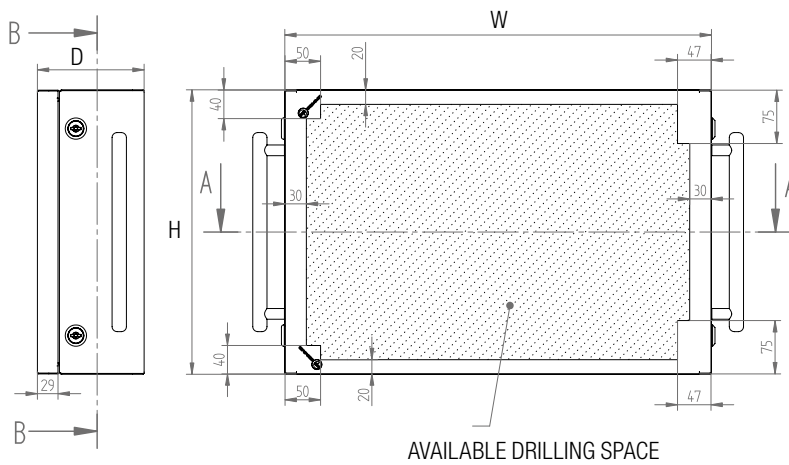


AVAILABLE ACCESSORIES

VERSION WITH 1 CLOSING POINT

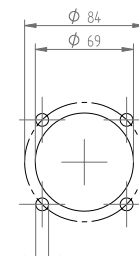


VERSION WITH 2 CLOSING POINTS



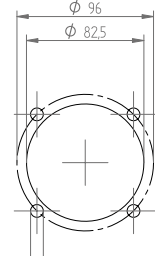
DRILLING DETAILS

Ø 48 JOINT

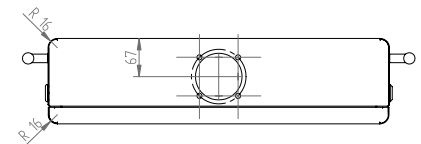


4 HOLES Ø 9

Ø 60 JOINT

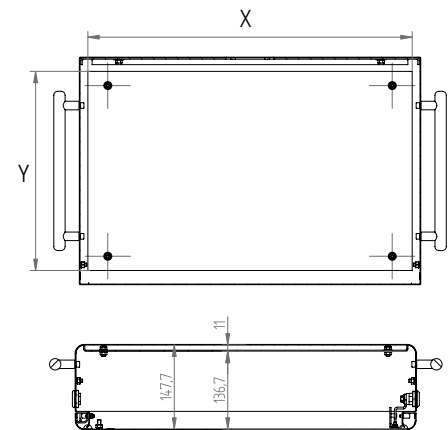


4 HOLES Ø 9



WIRING PLATE

(Accessory to be ordered separately)



AVAILABLE SPACE INSIDE THE PENDANT CONTROL PANEL WITH AND WITHOUT THE WIRING PLATE

Code Art.	External dim.			Wiring plate			Features		
	W	H	D	X	Y	Code	No. Closing points	No. Handles	Joint
KC403015	400	300	150	370	250	KP4030	1	2	Ø 48
KC453515	450	350	150	420	300	KP4535	1	2	Ø 48
KC504015	500	400	150	470	350	KP5040	2	2	Ø 60
KC505015	500	500	150	470	450	KP5050	2	2	Ø 60
KC604015	600	400	150	570	350	KP6040	2	2	Ø 60
KC605015	600	500	150	570	450	KP6050	2	2	Ø 60