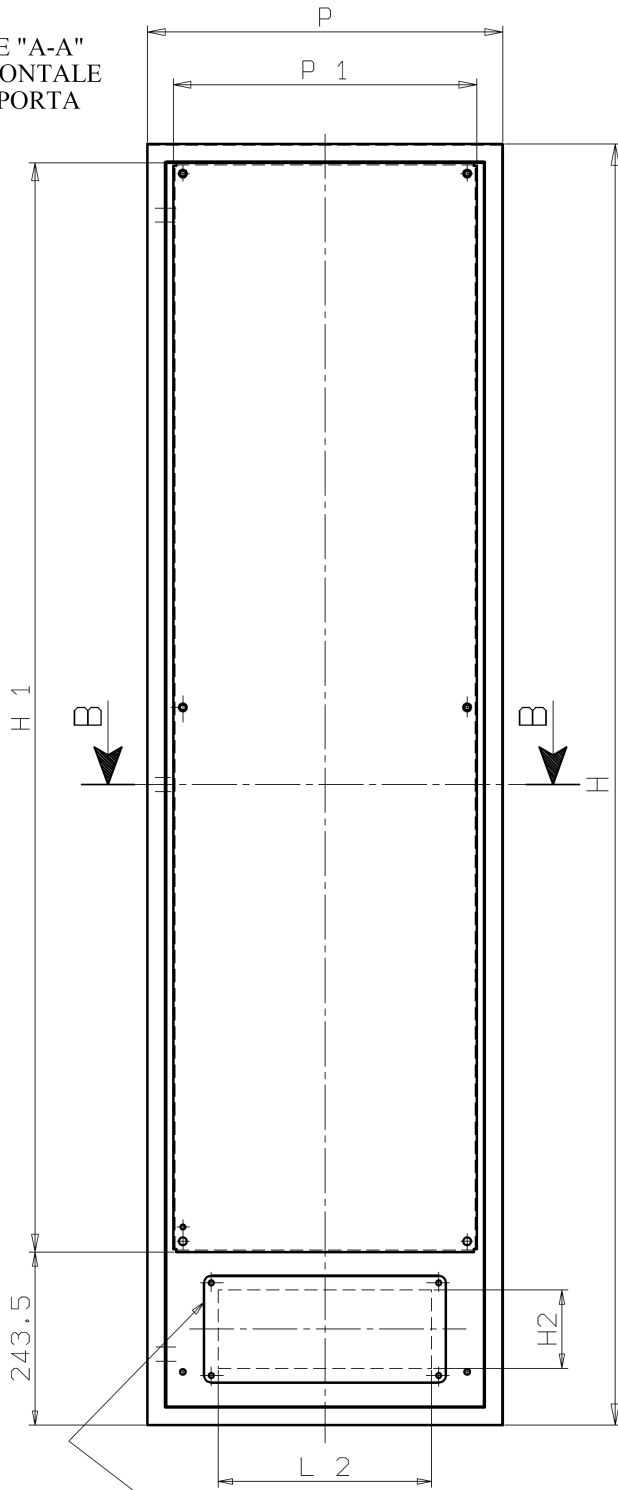




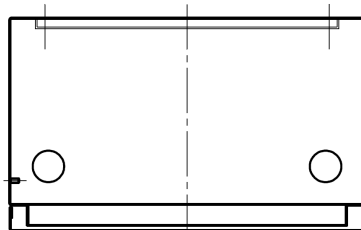
MPGAMMA

SEZIONE "A-A"
VISTA FRONTALE
SENZA PORTA

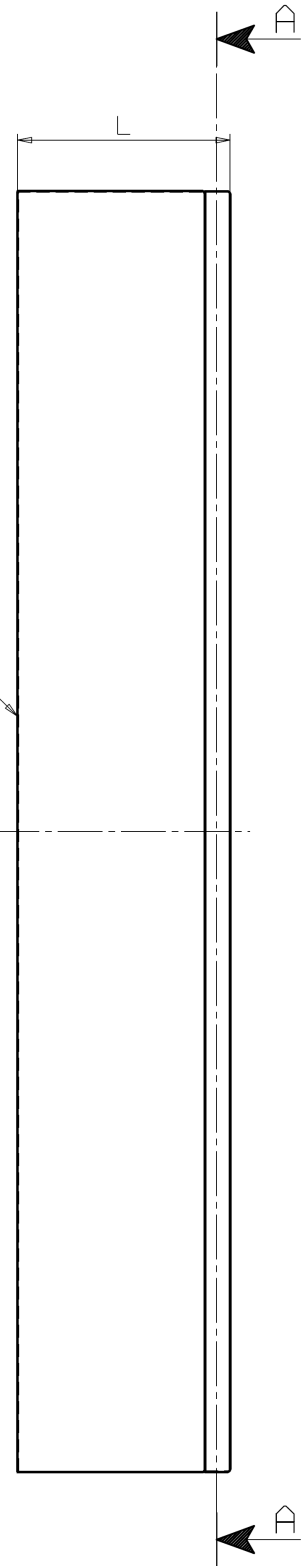


PASSAGGIO CAVI
CON FLANGIA

SEZIONE "B-B"
VISTA PIANTA



LATO AFFIANCAMENTO





MPGAMMA

CODICE	DIMENSIONI NOMINALI			DIM.PIASTRA DI FONDO COMPRESA		DIM.FORATURA PASSAGGIO CAVI	
	L	H	P	P1	H1	L2	H2
ERCM3018040_1	300	1800	400	327	1530	200	110
ERCM3018050_1	300	1800	500	427	1530	300	110
ERCM3018060_1	300	1800	600	527	1530	400	110
ERCM3018080_1	300	1800	800	727	1530	600	110
ERCM3020040_1	300	2000	400	327	1730	200	110
ERCM3020050_1	300	2000	500	427	1730	300	110
ERCM3020060_1	300	2000	600	527	1730	400	110
ERCM3020080_1	300	2000	800	727	1730	600	110